

Be Loud, Be Clear Awareness Profile

Bowel Cancer

West Midlands

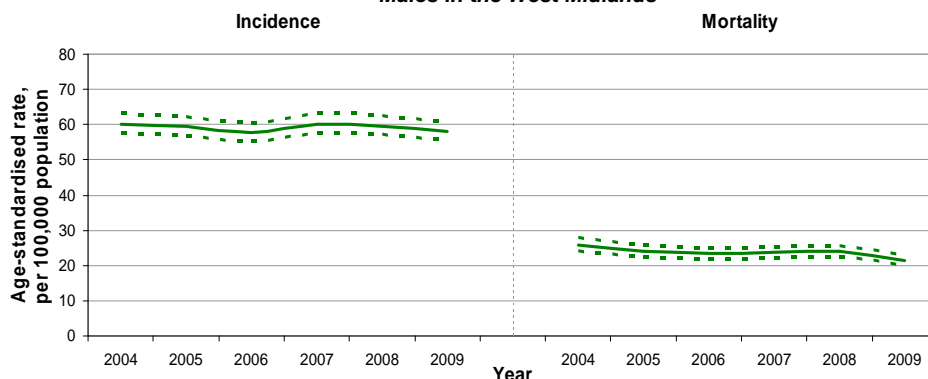


West Midlands
Cancer Intelligence Unit

- The term **bowel cancer** refers to tumours located in the colon, rectum, anus, anal canal or appendix.
- Symptoms** of bowel cancer include expelling faeces containing blood, bleeding from the rectum, changes in bowel habits lasting for more than three weeks (including diarrhoea, constipation, passing clear jelly-like mucus or passing faeces more often than normal), abdominal pain, stomach area lumps, a bloated feeling in the stomach or navel (belly button) area, vomiting or unexplained weight loss. In later stages increased bowel bleeding can lead to anaemia (reduced red blood cells) and symptoms such as fatigue.
- Increased risk** of bowel cancer is associated with eating a diet high in red and processed meat and low in fibre, smoking, drinking alcohol, being obese, low levels of exercise, having a family history of bowel cancer and having digestive diseases such as Crohn's disease or ulcerative colitis.

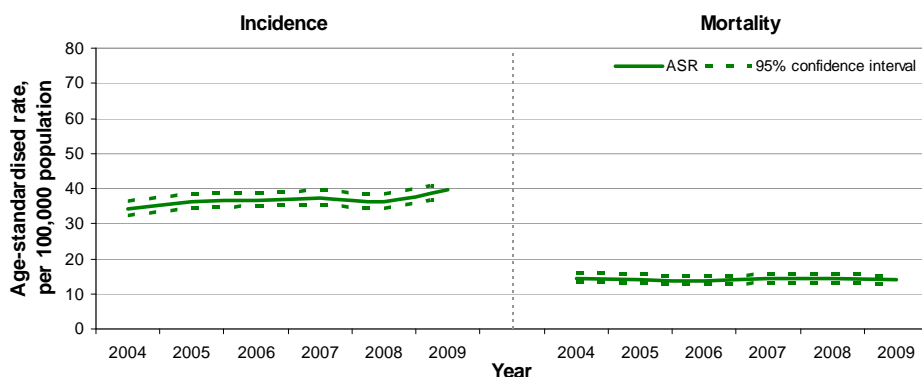
Bowel Cancer Incidence and Mortality

Bowel cancer incidence and mortality 2004-2009
Males in the West Midlands



Every year there are around 2,000 men in the West Midlands are diagnosed with bowel cancer. Around 800 men die annually of the disease each year. Between 2004 and 2009 over 11,800 men were diagnosed and over 4,800 died.

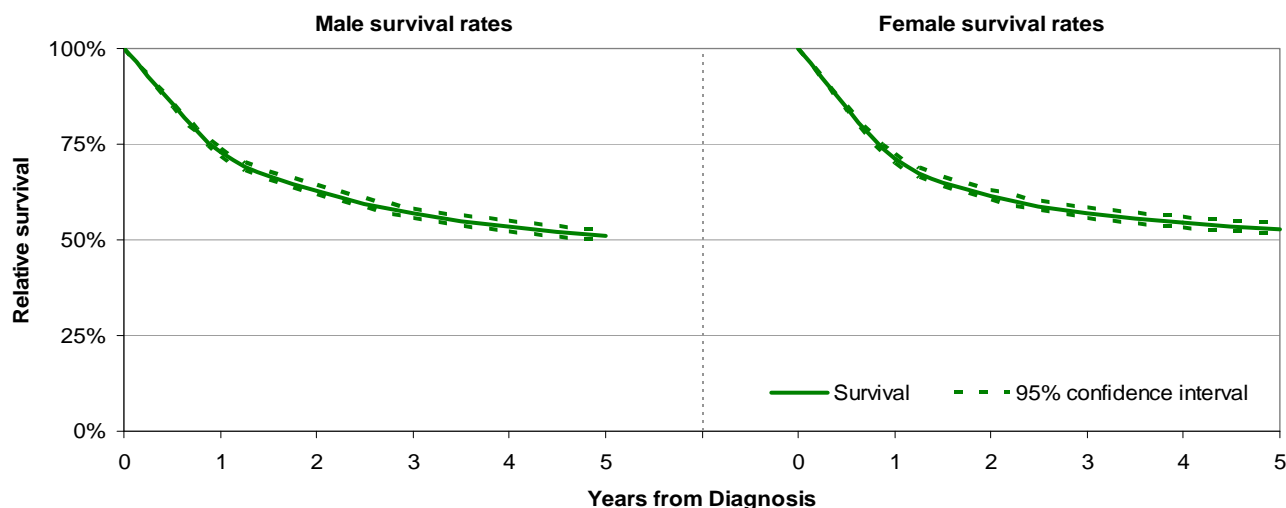
Bowel cancer incidence and mortality 2004-2009
Females in the West Midlands



Bowel cancer is less common in women than men. Over 1,500 women are diagnosed with bowel cancer each year in the West Midlands, and 660 die from the disease. Between 2004 and 2009 over 9,200 women were diagnosed and over 4,000 died.

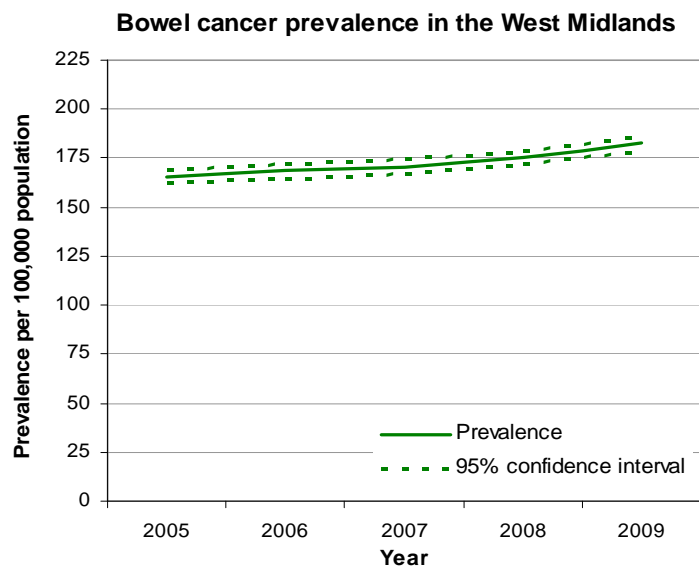
Bowel cancer incidence and mortality rates in the West Midlands have changed between 2004 and 2009. Male mortality has decreased significantly from 26 deaths per 100,000 population in 2004 to 21 deaths per 100,000 in 2009. Female incidence has increased significantly, from 34 cases per 100,000 population to 40 per 100,000 in 2009.

Bowel Cancer Survival Rates



For cancers diagnosed between 2001 and 2005, over 70% of people diagnosed with bowel cancer were still alive one year after their diagnosis. Over 50% of patients were still alive five years after their diagnosis. There are no significant differences in survival between men and women.

Bowel Cancer Prevalence



Cancer prevalence describes the number of people diagnosed with bowel cancer in the last five years who are still alive i.e. who are living with their cancer. In 2009 there were over 9,900 people living with bowel cancer in the West Midlands. This is around 183 in every 100,000 people in the West Midlands.

Prevalence rates are generally higher than incidence rates, as incidence is the number of people diagnosed with a new bowel cancer in a given year, while prevalence is the number of people living with a diagnosis of bowel cancer (many of whom will have been diagnosed in previous years).

Find out more:

If you would like more information about cancer in the West Midlands, or the analysis and data used in this profile, please contact the West Midlands Cancer Intelligence Unit:

Tel: 0121 414 7711 **Email:** ciuinfo@wmciu.nhs.uk **Website:** <http://www.wmciu.nhs.uk>

If you would like more information on bowel cancer, please visit <http://www.beatingbowelcancer.org/> or <http://www.cancerresearchuk.org/>

<http://www.wmciu.nhs.uk>